

NOTE: CONCRETE REQUIREMENTS

IOWA DOT C-4 MIX CONTAINING QUARTZITE AGGREGATE.

MINIMUM 28 DAY COMPRESSIVE STRENGTH OF 4,000 PSI.

AIR CONTENT: 6.5%–8.5%

MAXIMUM SLUMP NOT TO EXCEED 5 INCHES.

CONTROL JOINTS SHALL BE SAW CUT. SPACING SHALL NOT TO EXCEED WIDTH OF TRAIL.

FINISH TEXTURE SHALL BE LIGHT BROOM OR BURLAP DRAG.

CONTRACTOR IS RESPONSIBLE FOR PROTECTING THE CONCRETE FROM COLD WEATHER AND PRECIPITATION.

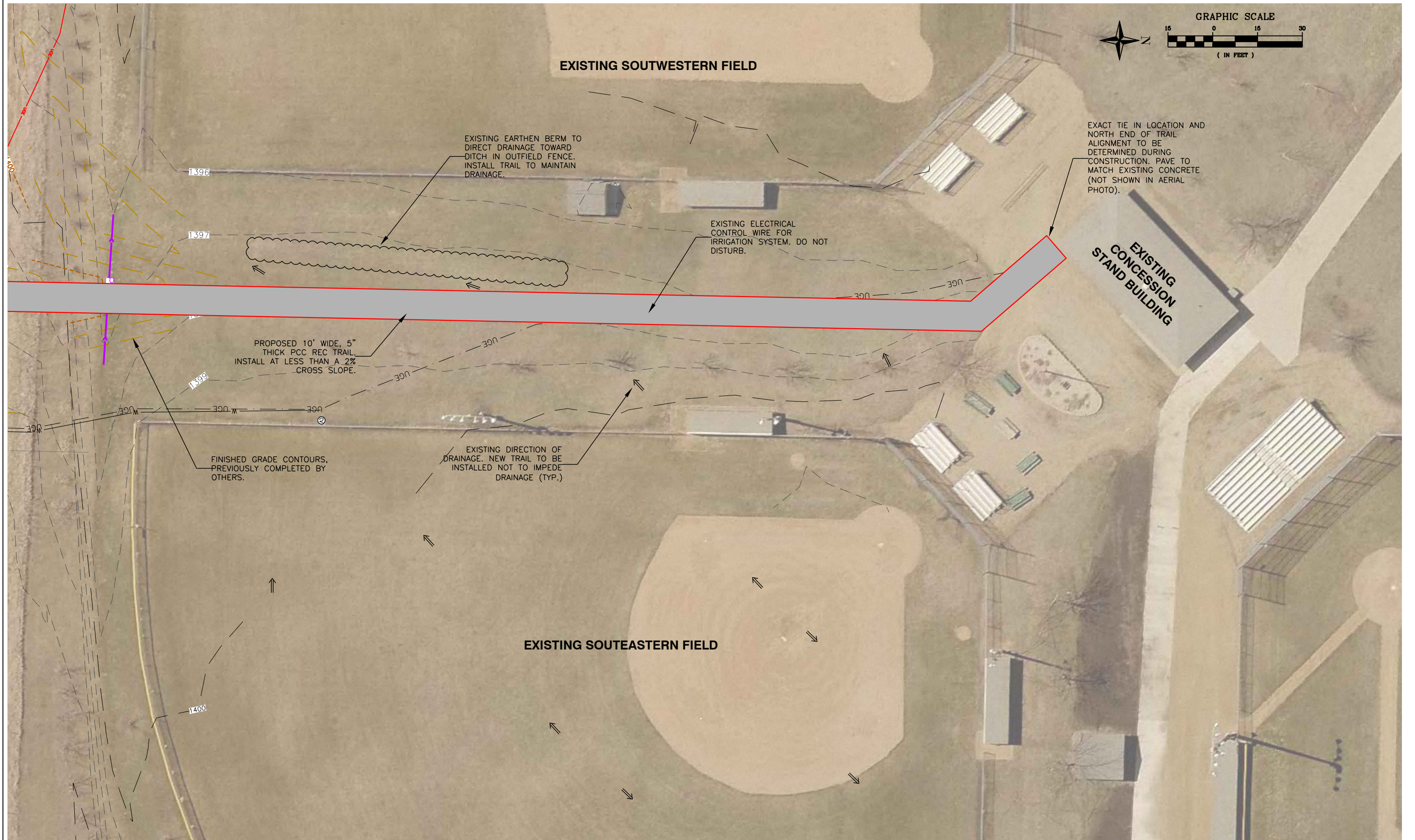
REV	DATE	DESCRIPTION

DGR ENGINEERING

Project Manager: JPC
 Designer: JPC
 Project Number: 368075
 Phone: (712) 472-2531

**SOFTBALL COMPLEX
ROCK RAPIDS, IA**

REC TRAIL PLAN



REV	DATE	DESCRIPTION

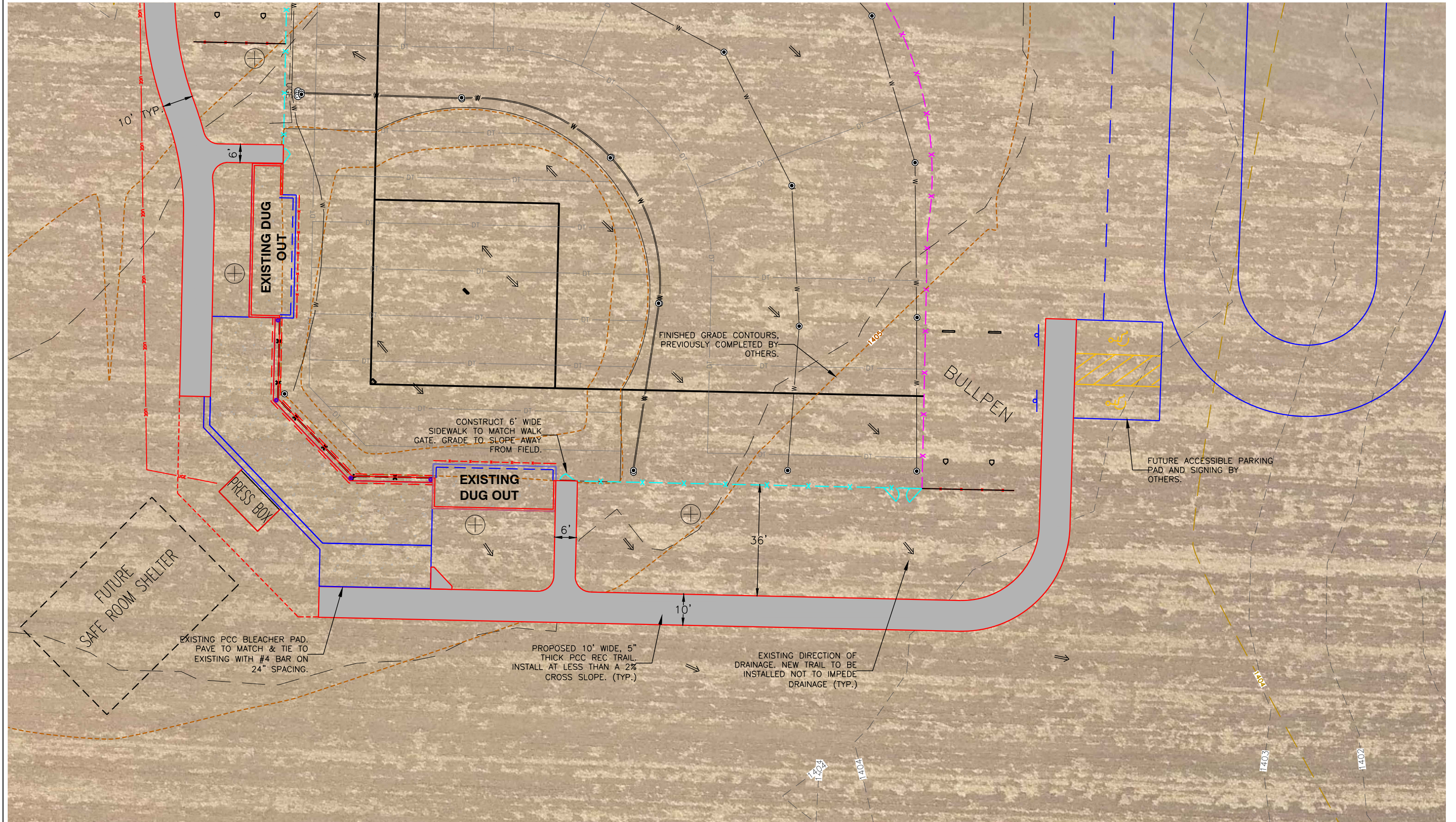
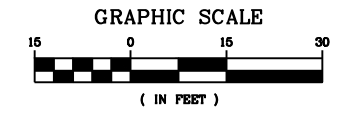


Project Manager: JPC
 Designer: JPC
 Project Number: 368075
 Phone: (712) 472-2531

**SOFTBALL COMPLEX
 ROCK RAPIDS, IA**

REC TRAIL PLAN

SHEET
S.02



REV	DATE	DESCRIPTION



Project Manager: JPC
 Designer: JPC
 Project Number: 368075
 Phone: (712) 472-2531

SOFTBALL COMPLEX
 ROCK RAPIDS, IA

REC TRAIL PLAN

S
H
E
E
T

S.03