

January 29th, 2015 Life Science (Day103)

1. Quiz C9S3
2. Notecard Characteristics- *Are your notecards completed?*

 - Go through the notecard information (Sponges and Cnidarians)
 - Active Art: 'Structure of a Sponge' (code: cep-2013)
 - Calculating the Rate of Water flow through a Sponge

3. Assignment
 - Sponge and Cnidarian Web Quest

Nov 13-12:58 PM

1-29 Class Notes: C9S3

Characteristics of Sponges (PORIFERA)

1. live underwater in colonies
2. filter-feeders (pore-bearing)
3. move only during their larva stage of development
4. no tissues or organs
5. invertebrates that reproduce with spores (egg)
6. no symmetry
7. reproduces sexually and asexually

Dec 17-1:08 PM

Characteristics of Cnidarians 'stinging cells'

1. they use stinging cells on their tentacles to capture their food
2. 2 different body plans
 - 'vase' or a POLYP body plan
 - 'bell shaped' or a MEDUSA body plan
3. reproduction type depends on the type of body plan
4. invertebrates
5. obtain their food and bring it to their central body cavity
6. FIRST type of organism to have tissues and systems
 - nervous system (a series of 'nets' to sense things)

Dec 17-1:12 PM

Untitled

Grade:«grade»
 Subject:«subject»
 Date:«date»

Dec 17-1:00 PM

1 Which phylum of animals meets the following description? Invertebrates usually with no body symmetry and never have tissues or organs. Their bodies are hollow tubes so water can get in and out.

A cnidarians
 B sponges

Dec 17-12:54 PM

2 A cnidarian with a bowl-shaped body plan with a mouth on the underside of its body. Tentacles trail its body and stinging cells are used to stun their prey.

True
 False

Dec 17-1:04 PM

3 Most cnidarians with a polyp body plan live in large groups called _____.

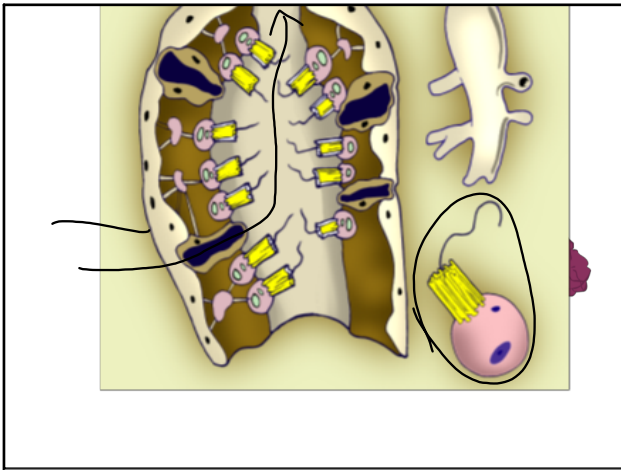
- A packs
- B prides
- C colonies
- D flocks

Dec 17-1:05 PM

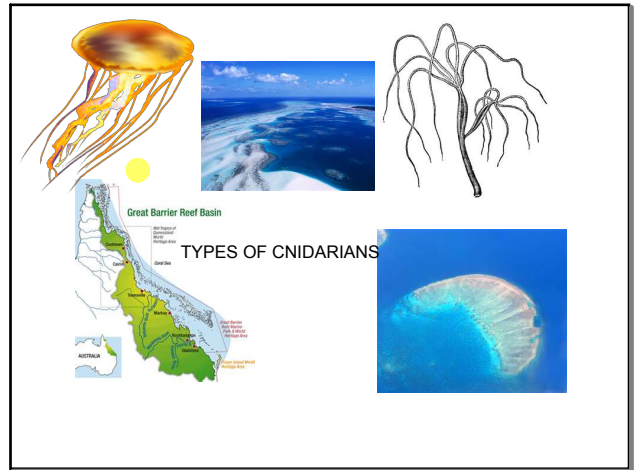
4 This phylum name means 'stinging cells'. All of the members of this phylum either have a medusa or polyp body plan. A jellyfish is an example of this particular phylum.

- A cnidarians
- B sponges

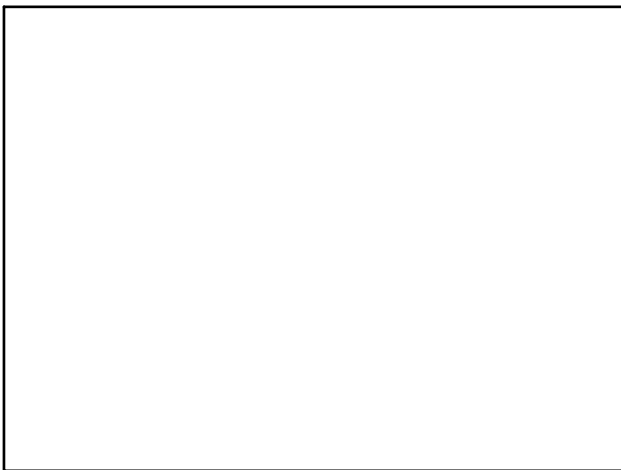
Dec 17-1:00 PM



Dec 14-12:56 PM



Dec 14-12:58 PM



Dec 15-11:17 AM